

# Sensitivity of a combined DLS/Raman technique to estimate the conformational and colloidal stability of protein therapeutics

## A Malvern Instruments' Bioscience Development Initiative

### Executive summary

Combining dynamic light scattering (DLS) and Raman spectroscopy provides the ability to extract a wealth of chemical, structural, and physical parameters from proteins at both low and formulation concentrations. DLS, used to study protein size, and Raman, used to determine protein conformation, is combined into a single instrument to monitor stressed protein samples under identical conditions.

DLS is ideally suited to measuring the size of proteins at low concentrations (down to 0.1 mg/mL), while Raman spectroscopy is ideally suited to deriving secondary and tertiary structural markers from higher concentration protein samples (50 mg/mL or greater). One practical area of interest is understanding the lowest concentration of a protein that can be studied using these combined analytical techniques. Because DLS is known to be appropriate for analyzing low concentration samples, this note will outline the lowest practical protein concentration limit for acquiring Raman spectra, and determine if the spectra provide useful secondary and tertiary structure information. Results using lysozyme indicate that useful information from concentrations as low as 3 mg/mL can be acquired, while monoclonal antibody samples (mAbs) may require a higher concentration to obtain correct structural and thermal information.

The ability of a combined DLS/Raman instrument to study various concentrations of protein samples is explored. DLS, with its capability to measure protein size, is ideal for low concentration samples, while Raman, with its ability to interrogate protein secondary and tertiary structure, is ideal for high concentration samples. Joining the techniques into a single technology allows for the determination of size and structure on a single small volume sample. However, because the complementary techniques have differing ideal concentrations, it is important to first establish the upper and lower practical concentration boundaries for a protein sample. This note focuses on determining the lowest concentration limit for studying proteins with combined DLS/Raman.

### The approach

Malvern Instruments' Zetasizer Helix (ZS Helix) integrates a fiber-coupled Raman spectrometer with a Zetasizer Nano ZSP to provide DLS (colloidal stability) and Raman (conformational stability) data sequentially on a single sample. The Zetasizer Nano system integrates proprietary non-invasive backscatter (NIBS) detector technology with dynamic (DLS), static (SLS) and electrophoretic (ELS) light scattering to measure the hydrodynamic radius of proteins from 0.15 nm - 5  $\mu$ m, from 0.1 mg/mL to  $\geq$  100 mg/mL. Raman spectra are collected using 785 nm excitation ( $\sim$ 280 mW) from 150  $\text{cm}^{-1}$  - 1925  $\text{cm}^{-1}$  at 4  $\text{cm}^{-1}$  resolution. Sample aliquots ( $\sim$ 120  $\mu$ L) are placed into a 3 mm quartz cuvette and positioned in a temperature controlled compartment that provides temperature control from 0°C - 90°C  $\pm$  0.1°C. Thermal ramp studies are conducted by collecting Raman and DLS data over a series of pre-defined 0.1°C - 5°C step-wise increments. Isothermal incubation studies are conducted by collecting a series of Raman and DLS data over a pre-defined time interval at a desired temperature set-point.

Raman spectral data collection conditions are optimized for low concentration protein samples to determine a practical detection limit for acquiring Raman spectra for protein therapeutics. Two samples are analyzed, lysozyme and a mAb, at multiple concentrations. Secondary structural markers, including amide I (1600  $\text{cm}^{-1}$  - 1700  $\text{cm}^{-1}$ ) and amide III (1200  $\text{cm}^{-1}$  - 1350  $\text{cm}^{-1}$ ), are observed, along with tertiary structural markers, such as tyrosine (Tyr) at  $\sim$ 830  $\text{cm}^{-1}$  and tryptophan (Trp) at  $\sim$ 1550  $\text{cm}^{-1}$  during thermal ramp experiments. Changes in these markers indicate a change in the structure of the protein during heating, so the ability to detect any changes is inherently important to studying protein structure.

## Results and Discussion

This application note focuses on determining the lowest concentration of protein that can be studied using a combined DLS/Raman instrument. Because DLS is ideal for lower concentration samples (addressed in a previous application note), most of the effort here has been employed in optimizing the Raman acquisition parameters. Up to a certain limit (saturating the detector), there is a positive linear relationship between integration time and Raman signal, and a square root relationship between the number of co-adds and the Raman signal-to-noise. Therefore, to increase the Raman signal from lower concentration samples that have less Raman scattering particles available, it makes sense to increase the integration time as long as possible and increase the number of co-additions of multiple scans (co-adds). However, in an effort to keep experiment times practical, all acquisition times are kept at or below 30 minutes for both the lysozyme and mAb low concentration samples. The higher concentration samples are used to establish expected changes in the protein structure. Below is a summary of the acquisition parameters used for collecting both lysozyme and mAb data (Table 1).

Table 1: Data acquisition parameters for lysozyme and mAb samples at a single temperature increment. Two instruments were used for data collection: one for lysozyme and one for the mAb

Sample	Integration time (s)	Co-adds (#)	Raman acquisition time (s)/T	Total acquisition time (min)/T
35 mg/mL lysozyme	15	10	150	5.5
12 mg/mL lysozyme	30	10	300	8
3 mg/mL lysozyme	40	40	1600	30
50 mg/mL mAb	20	10	200	6
10 mg/mL mAb	20	10	200	6
5 mg/mL mAb	25	40	1000	20

## Lysozyme

Thermal ramping experiments are performed to interrogate 3 mg/mL, 12 mg/mL, and 35 mg/mL lysozyme samples in citrate buffer at pH 4. The highest concentration sample is used as a point of reference for the low concentration sample comparisons.

Spectra of a 35 mg/mL lysozyme solution at 25°C (represented by the light red trace) and 90°C (represented by the dark red trace) are included (Figure 1A). Some protein markers of interest are highlighted, indicating the changes in secondary and tertiary structure during the temperature ramp experiment. Changes are evident in the amide I (~1600  $\text{cm}^{-1}$ - 1700  $\text{cm}^{-1}$ ), amide III (~1200  $\text{cm}^{-1}$ - 1350  $\text{cm}^{-1}$ ), and the  $\alpha$ -helix skeletal (930  $\text{cm}^{-1}$  - 950  $\text{cm}^{-1}$ ) regions, as well as the Trp at 760  $\text{cm}^{-1}$ .

DLS size data (intensity distribution) is also included for the high concentration lysozyme sample (Figure 1B). As expected, results indicate that as the temperature increases, the size of the lysozyme increases as well. This suggests protein unfolding (and possibly aggregation) is occurring as the temperature rises, which is consistent with the spectral data that indicates that the structure of the protein is changing as the temperature increases. Additionally, the center of mass (COM) shift with temperature for the amide I peak is included (Fig. 1C). As the temperature increases, the COM shifts to higher wavenumbers, indicating that the structure is changing from  $\alpha$ -helix to  $\beta$ -sheet rich as the temperature increases. At this relatively high concentration, both the spectral and size transitions are obvious, the Raman data can be used for both protein detection and characterization, and transition information can be extracted. This information is used as a comparison for the lower concentration data.

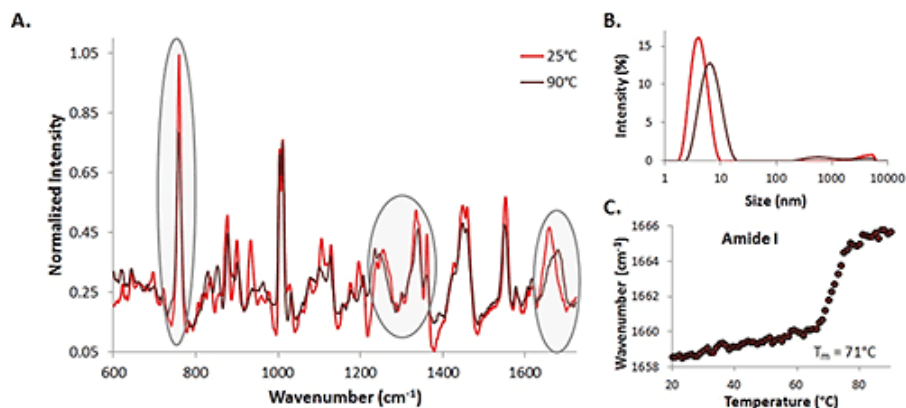


Figure 1: Comparison of 35 mg/mL lysozyme spectra at 25°C (red line) and 90°C (dark line) (A), size data at the same temperatures (B), and the amide I peak shift with temperature (C). Some protein secondary and tertiary structure markers are identified. Spectra are background corrected and normalized to the phenylalanine peak (~1004 cm<sup>-1</sup>). Size data indicates that as the temperature increases, the size of the protein increases, and the amide I peak shifts to higher wavenumbers

To increase the signal to noise ratio of the Raman data for the lower concentration samples, longer integration times and more accumulations must be used than those needed for the higher concentration samples. This results in longer data collection time per spectrum. Data accumulation times as long as 30 min for a single temperature point (DLS and Raman) were used for the lowest concentration lysozyme samples (Table 1). Though this results in a longer experiment, it allows for the identification of secondary and tertiary structural markers in the Raman data, and in some cases, allows for the determination of spectral changes resulting from thermal stress.

Raman spectra, DLS intensity distributions, and amide I COM shifts for high (35 mg/mL), medium (12 mg/mL) and low (3 mg/mL) lysozyme concentrations are compared in Figure 2.

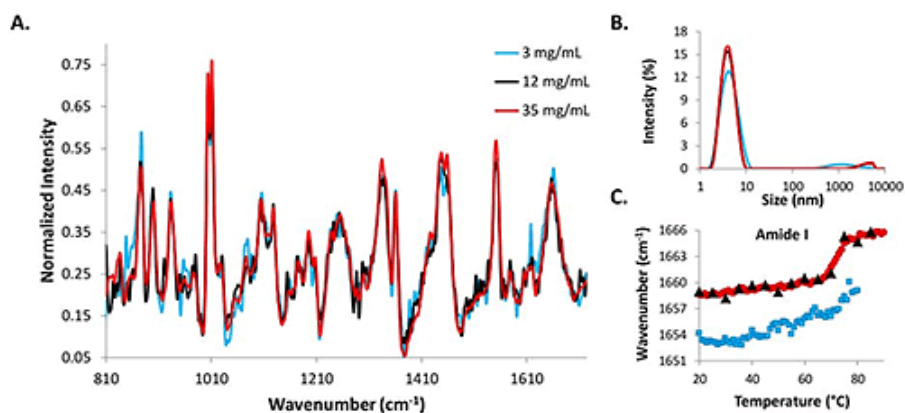


Figure 2: Structural and size data from 3 mg/mL, 12 mg/mL, and 35 mg/mL lysozyme in pH 4 citrate buffer solutions. Raman data is at 25°C and indicates that the lowest concentration sample (blue line) results in the noisiest spectrum, while the 35 mg/mL data is the least noisy. The 12 mg/mL data falls somewhere in between. The spectra are normalized to the height of the Phe peak and background corrected (A). Intensity distribution for 3 mg/mL (blue line), 12 mg/mL (black line), and 35 mg/mL (red line) at 25°C are included. The size data for all 3 samples is approximately 4 nm before heating (B). The COM shifts with temperature for amide I for 3 mg/mL (blue circles), 12 mg/mL (black triangles), and 35 mg/mL (red circles) lysozyme samples are included. Note that the 3 mg/mL data was only acquired until 80°C and the 12 mg/mL data was acquired at 5°C increments instead of 1°C increments (C)

The Raman spectrum for the 35 mg/mL (red line) data is the least noisy, while the data from the 3 mg/mL concentration lysozyme sample (blue line) is the most noisy, and the 12 mg/mL sample (black line) falls somewhere in the middle of the two (Fig. 2A). Even with the increased acquisition times, the signal from the low concentration sample is noisier than those from the two higher concentration samples. Intensity distributions from the DLS data indicate that the protein molecules in solution are all ~4 nm at 25°C (Fig. 2B). The similarity between the size data and the spectral data at the starting temperatures for all three concentrations indicates that DLS/Raman can be used for lysozyme detection at concentrations as low as 3 mg/mL.

To further evaluate the ability of the DLS/Raman instrument to detect low concentration protein samples, the COM shift for the amide I peak is included for all concentrations (Fig. 2C). The red line represents the high concentration sample and clearly exhibits a shift to higher wavenumbers with a melting temperature of 71°C (determined by fitting a sigmoid to the curve). The 12 mg/mL data shows a similar transition (black triangles that are overlaying the red circles); however, melting temperature cannot be confirmed with this sample because temperature increments were 5°C steps instead of 1°C steps (to avoid possible kinetic effects). The similarity between the trends is apparent, though. The 3 mg/mL COM shift is less obvious and cannot be confirmed. Due to time required for the measurement, data was only collected until 80°C, as opposed to 90°C as with the higher concentration samples, and there is no sharp transition as was observed with the higher concentration samples. A more gradual transition could potentially be taking place at lower temperatures, but it is impossible to tell if this transition is the result of protein structural changes solely as the result of increased temperature, or if it is the result of the temperature increase in combination with the greater length of time during which the protein solution is exposed to higher temperatures (as a result of the long data acquisition times at each temperature increment).

Additional comparisons between the high concentration and low concentration samples are made by using an in-house PLS model to determine the secondary structural composition of 5 concentrations of lysozyme (Fig. 3).

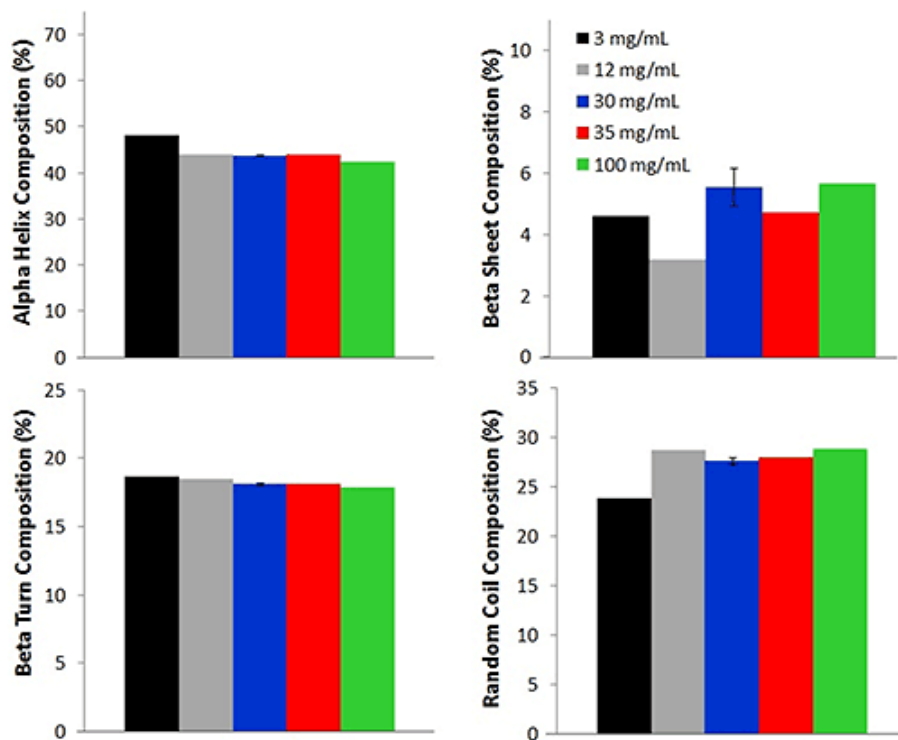


Figure 3: Secondary structure PLS model used to determine alpha helix, beta sheet, beta turn, and random coil compositions from samples of various lysozyme concentrations (3 mg/mL, 12 mg/mL, 30 mg/mL, 35 mg/mL, and 100 mg/mL) at 25°C (12 mg/mL values are reported at 30°C). All values represent a single replicate, except for the 30 mg/mL values and the 100 mg/mL values. The average is reported for three 30 mg/mL sample replicates and error bars represent the standard deviation, while the 100 mg/mL values are the average results from two samples at pH 4.7

Four different secondary structure compositions: alpha helix, beta sheet, beta turn, and random coil, are predicted for each of the lysozyme samples. For all concentrations, the alpha helix percentage is the highest, with an average percentage of  $44.0\% \pm 2.0\%$ . This value agrees with literature reports of lysozyme solutions at pH values near 4<sup>[1,2]</sup>. Random coil composition,  $28.0\% \pm 2.0\%$ , is reported as the second highest concentration, followed by beta turn ( $18.0\% \pm 0.3\%$ ), and beta sheet ( $6.0\% \pm 1.0\%$ ). Although a small difference (reported as standard deviation) is observed between the various concentrations, the values are very similar across the concentrations, again indicating that the Raman data collected from the low concentration samples is a good representation of the lysozyme.

The results from the lysozyme thermal ramping studies indicate that concentrations as low as 3 mg/mL can be detected/identified using Raman spectroscopy, but for any information regarding the conformational changes during heating, a higher concentration sample is probably needed.

## Monoclonal Antibody

Similar to lysozyme, high concentration (50 mg/mL), medium concentration (10 mg/mL), and low concentration (5 mg/mL) samples of a mAb were studied using the combination of DLS/Raman. Thermal ramping experiments were performed from 25°C - 90°C with 0.2°C - 0.5°C steps for all concentrations. High concentration data was collected first and used as a comparison for the low concentration sample data.

The Raman collection time for the high concentration sample was ~ 3.3 minutes per temperature increment (Table 1). This collection time resulted in a Raman spectrum with a high signal to noise ratio. The Raman spectra at 30°C and 80°C are included (Fig. 3). Here, the wavenumber shifts that indicate protein structural changes are less obvious than in the model protein, lysozyme, that was studied above. However, upon analysis, it is evident that tertiary structural changes are occurring when the protein solution is under thermal stress. In this case, the tertiary structural changes are more prominent than the secondary structural changes. Some of these secondary and tertiary structural shifts are highlighted.

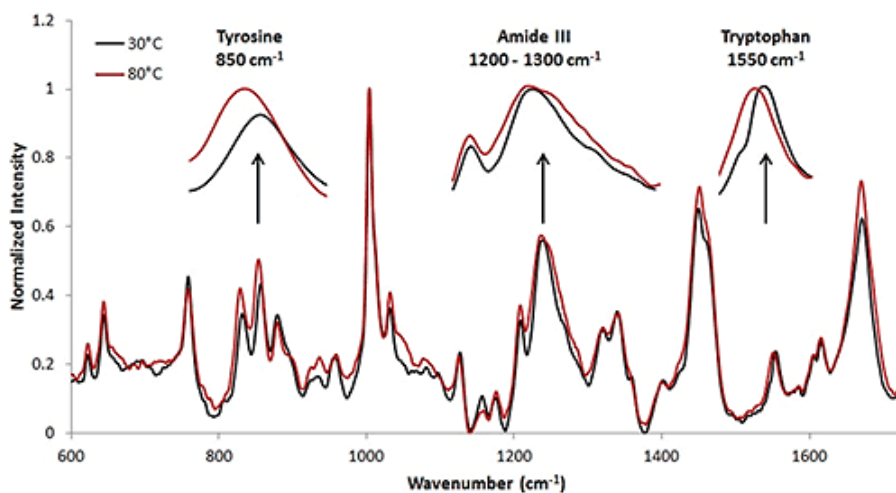


Figure 4: Spectra of high concentration mAb (50 mg/mL data). Thermal transitions are less obvious than with the lysozyme sample (Fig. 1); however changes in the secondary and tertiary structural markers are still visible at the high concentration.

Assessing the mAb data at lower concentrations proved to be more difficult than analyzing the low concentration lysozyme sample, and more difficult even than the high concentration mAb sample. Figure 4 includes spectra from 50 mg/mL (red line), 10 mg/mL (black line), and 5 mg/mL (blue) mAb samples at 25°C. The highest concentration sample results in the least noisy spectrum, while the data from the low concentration sample is the most noisy. With the mAb samples, secondary structure does not change significantly, so small changes in the tertiary structure are evaluated. With the low concentration sample, it is much more difficult to identify the markers. One important area of interest is highlighted, and demonstrates the difficulty in seeing the markers, in this case, Tyr, in the  $830\text{ cm}^{-1}$  -  $855\text{ cm}^{-1}$  range. Results indicate that the low concentration data is noisier than the high concentration data, similar to the results obtained from the lysozyme samples.

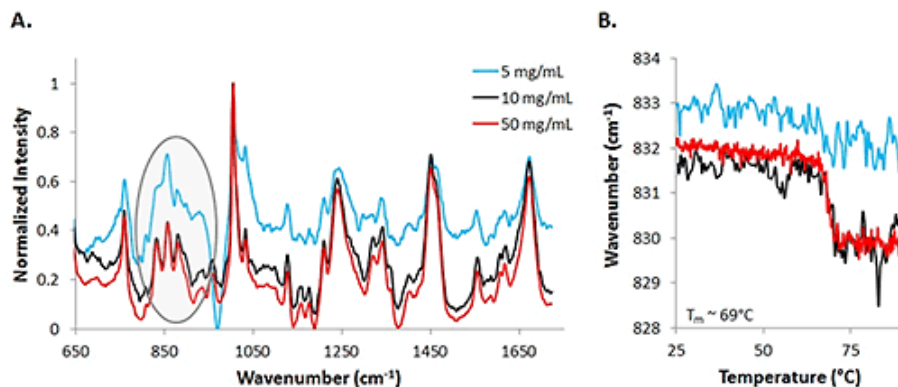


Figure 5: Comparison of low (5 mg/mL), medium (10 mg/mL) and high (50 mg/mL) mAb spectra (A) and COM shifts for selected protein markers (B). The low concentration data (blue lines) are noisier than the medium concentration (black line) and high concentration (red line) data. An area of interest is highlighted to demonstrate the difference in spectra (A). COM shifts for the tertiary structure predictor, Tyr, at  $\sim 830$  cm<sup>-1</sup> are included for all three concentrations. The most obvious and least noisy shift is for the 50 mg/mL mAb sample (red line), while the 10 mg/mL sample shows the same shift, although more noisy (black line). The 5 mg/mL sample shows no discernable change in the COM with an increase in temperature (B)

To further establish that the data between the high and low concentration samples differs in quality, COM shifts are graphed for Tyr markers at 50 mg/mL, 10 mg/mL, and 5 mg/mL samples (Fig. 4B). A significant shift is observed for the 50 mg/mL solution (red line) and an estimated melting temperature of 69°C is obtained by fitting a sigmoid to the curve. The 10 mg/mL data also shows a similar shift with the increase in temperature (black line). However, by observing the COM data from the 5 mg/mL sample, there is not an obvious shift in the COM with an increase in temperature. The signal is dominated by the noise, even with an increase in integration time. Based upon the information obtained from the mAb sample at various concentrations, concentrations as low as 5 mg/mL can be used for detection of the sample, but for the elucidation of any type of thermal transitions, concentrations need to be at least as high as 10 mg/mL.

## Conclusions

The combination of DLS/Raman can easily be used for the elucidation of protein conformation (Raman) and size (DLS) changes when exposed to stressors. The lower concentration limit for Raman detection, traditionally only used to study high concentration samples, has been evaluated here by performing thermal ramping experiments. A model protein, lysozyme, at concentrations as low as

3 mg/mL can be studied, with the identification of secondary and tertiary structural markers. Monoclonal antibodies, on the other hand, with their more stable secondary structures, are more likely to exhibit only tertiary structural changes. Some of these markers can be identified at concentrations as low as

5 mg/mL, but for any transition information, concentrations need to be as high as 10 mg/mL. The combination of these complementary techniques can allow for the understanding of protein unfolding and aggregation pathways at both low and high concentrations.



## About Malvern's Bioscience Development Initiative

Malvern Instruments' Bioscience Development Initiative (BDI) was established to accelerate innovation, development and the promotion of new technologies, products and capabilities to address unmet measurement needs in the biosciences markets.

## References

1. Berjot, M., Marx, J., and Alix, A.J.P. 1987. Determination of the Secondary Structure of Proteins from Raman Amide I Band: The Reference Intensity Profiles Method. *J. Raman Spectrosc.* 18:289-300.
2. Levitt, M., and Greer, J. 1977. Automatic Identification of Secondary Structure in Globular Proteins. *J. Mol. Biol.* 114:181-293.



Malvern Instruments Limited  
Groewood Road, Malvern,  
Worcestershire, UK. WR14  
1XZ

Tel: +44 1684 892456  
Fax: +44 1684 892789  
[www.malvern.com](http://www.malvern.com)

Malvern Instruments is part of Spectris plc, the Precision Instrumentation and Controls Company.

Spectris and the Spectris logo are Trade Marks of Spectris plc.

**spectris**

All information supplied within is correct at time of publication.

Malvern Instruments pursues a policy of continual improvement due to technical development. We therefore reserve the right to deviate from information, descriptions, and specifications in this publication without notice. Malvern Instruments shall not be liable for errors contained herein or for incidental or consequential damages in connection with the furnishing, performance or use of this material.

Malvern Instruments owns the following registered trademarks: Bohlin, FIPA, Insitac, ISYS, Kinexus, Malvern, Malvern 'Hills' logo, Mastersizer, Morphologi, Rosand, 'SEC-MALS', Viscosizer, Viscotek, Viscogel and Zetasizer.